

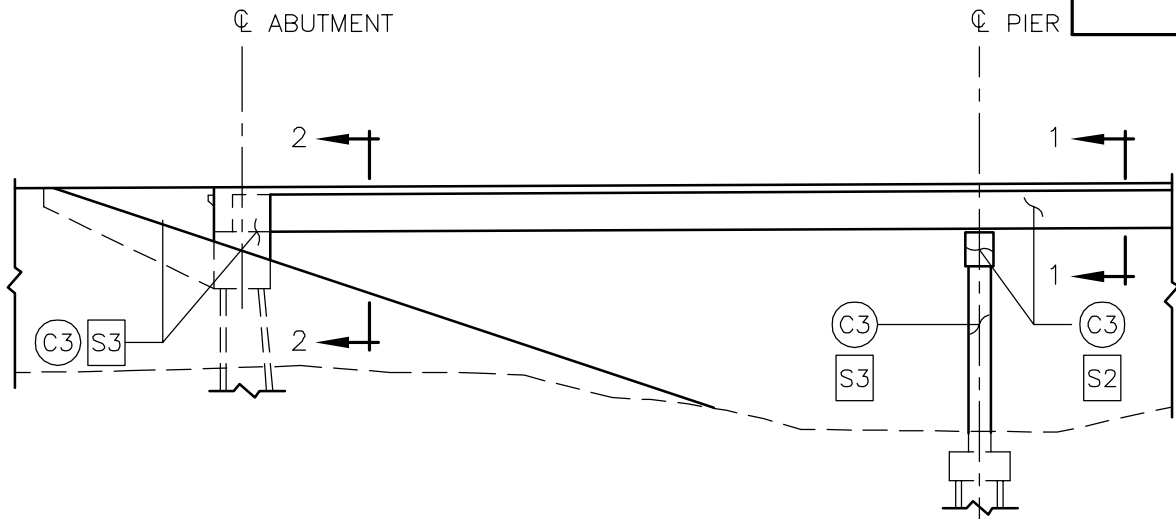
LEGEND



REVISIONS		
NO.	DATE	REVISION
1	29 JULY 15	ISSUED FOR COMMERCIAL CLOSE

REGINA BYPASS SCHEDULE 15 - APPENDIX B BRIDGE INFORMATION DRAWINGS CONCRETE SURFACE FINISHING DETAILS		
CS	TAB NO	SHEET
PHOTO DATE		SK-1
DRAWN BY	A. LECHKUN	DATE
DESIGNED BY	G. NEUMANN	DATE
		21 AUG 14
		21 AUG 14

SCALE (m)
PLAN 1:10000



ELEVATION
NTS

NOTES:

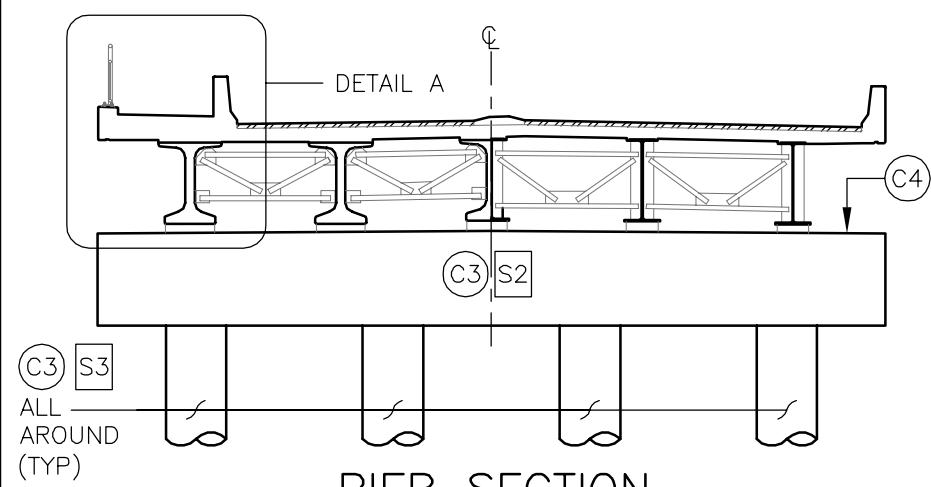
1. CONCRETE FINISHES SHALL BE AS DESCRIBED IN THE CONTRACT DOCUMENTS.
2. SEALERS SHALL BE OF THE TYPE AND MEET REQUIREMENTS AS DEFINED IN THE CONTRACT DOCUMENTS.
3. SEALERS SHALL EXTEND TO 600 mm BELOW GRADE ON ALL COMPONENTS.

CONCRETE FINISHES:

- (C1) CLASS 1, ORDINARY FINISH
- (C2) CLASS 2, RUBBED FINISH
- (C3) CLASS 3, BONDED CONCRETE FINISH
- (C4) CLASS 4, FLOATED FINISH
- (C5) CLASS 5, FLOATED FINISH, BROOM TEXTURE
- (C6) CLASS 6, FLOATED FINISH, SURFACE TEXTURE

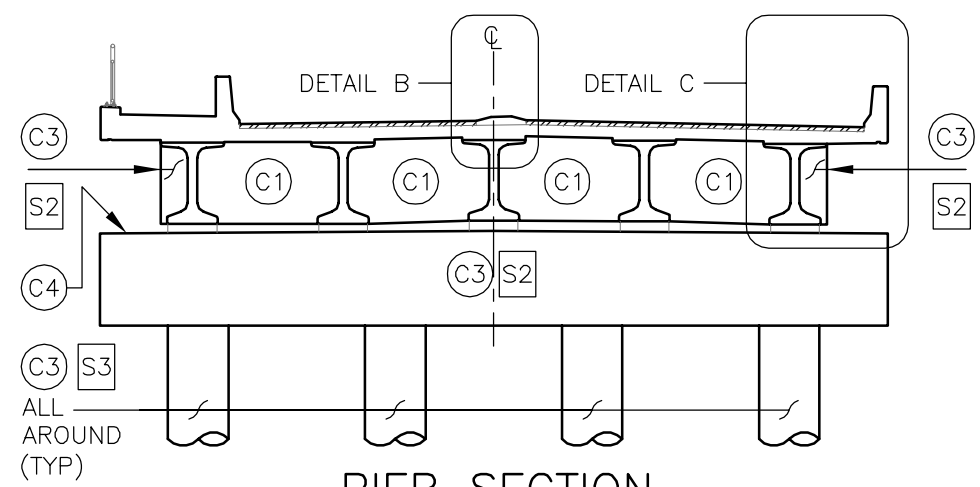
SEALERS:

- (S1) TYPE 3 SEALER, COLOUR xxxxxx 1
- (S2) TYPE 3 SEALER, COLOUR xxxxxx 2
- (S3) TYPE 3 SEALER, COLOUR xxxxxx 3
- (S4) TYPE 1C SEALER



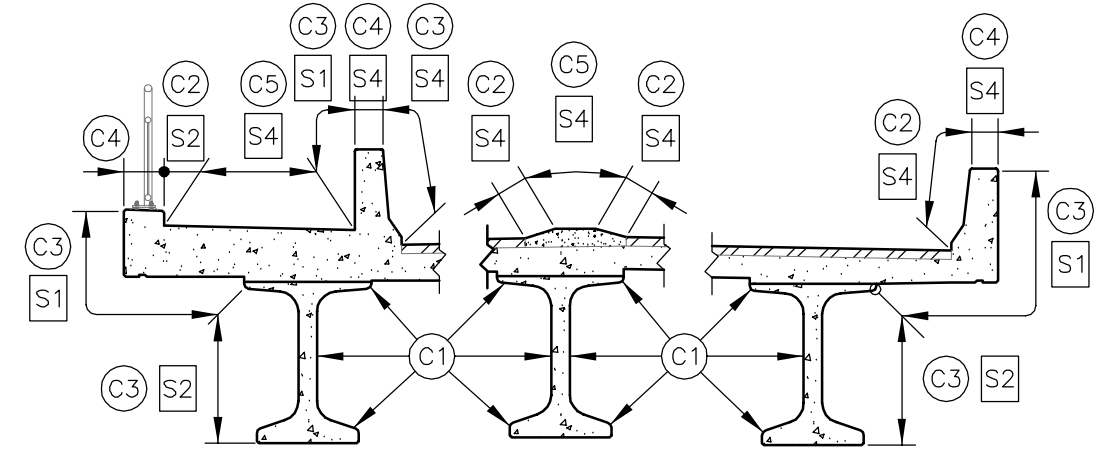
PIER SECTION

(C3) (S3)
ALL AROUND (TYP)



SECTION 1
NTS

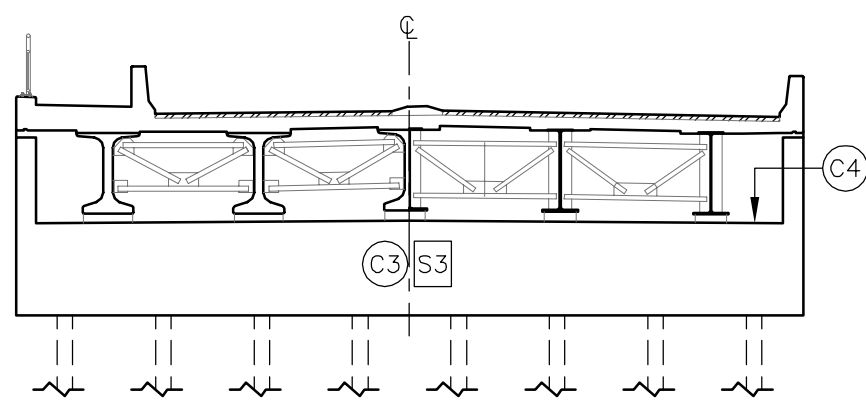
(C3) (S3)
ALL AROUND (TYP)



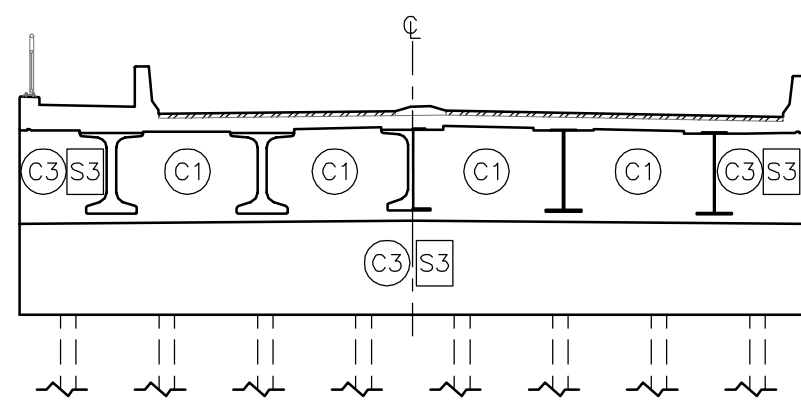
DETAIL A
NTS

DETAIL B
NTS

DETAIL C
NTS

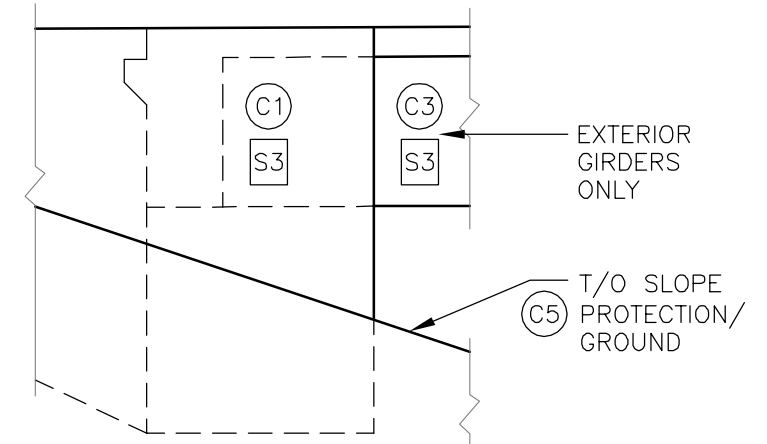


CONVENTIONAL ABUTMENT



SECTION 2
NTS

SEMI/FULL INTEGRAL ABUTMENT

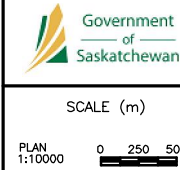


DETAIL D
NTS

EXTERIOR GIRDERS ONLY

(C5)
T/O SLOPE PROTECTION/GROUND

LEGEND

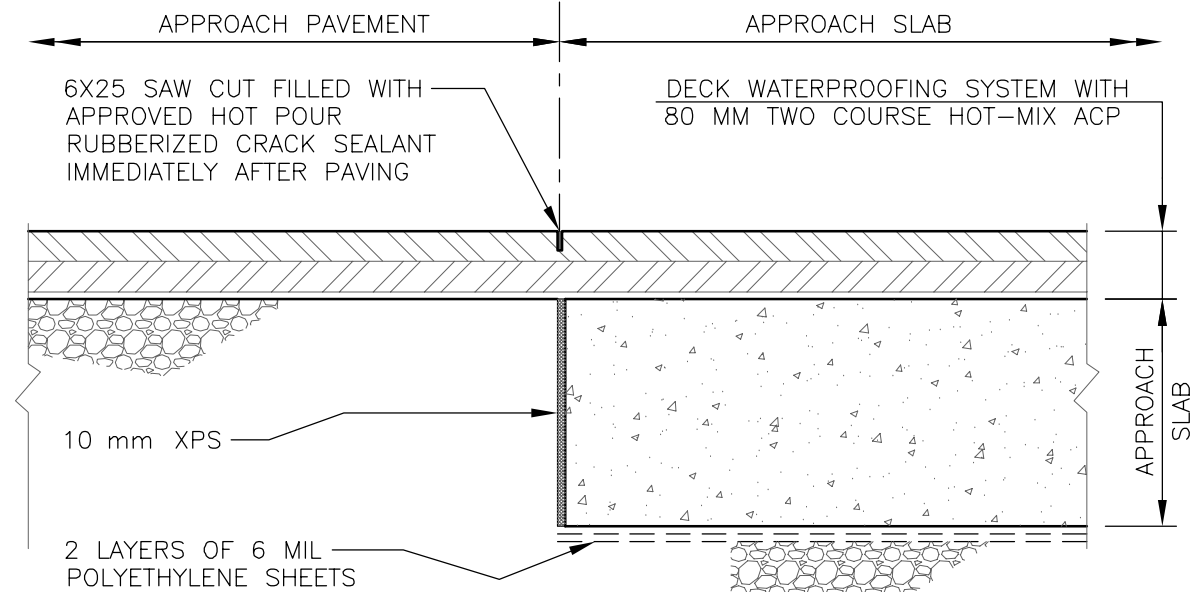


REVISIONS		
NO.	DATE	REVISION
1	29 JULY 15	ISSUED FOR COMMERCIAL CLOSE

REGINA BYPASS
SCHEDULE 15 – APPENDIX B
BRIDGE INFORMATION DRAWINGS
CYCLE CONTROL JOINTS DETAILS

CS	PHOTO DATE	TAB NO	SHEET
			SK-2

DRAWN BY	DATE	DESIGNED BY	DATE
A. LECHKUN	21 AUG 14	G. NEUMANN	21 AUG 14

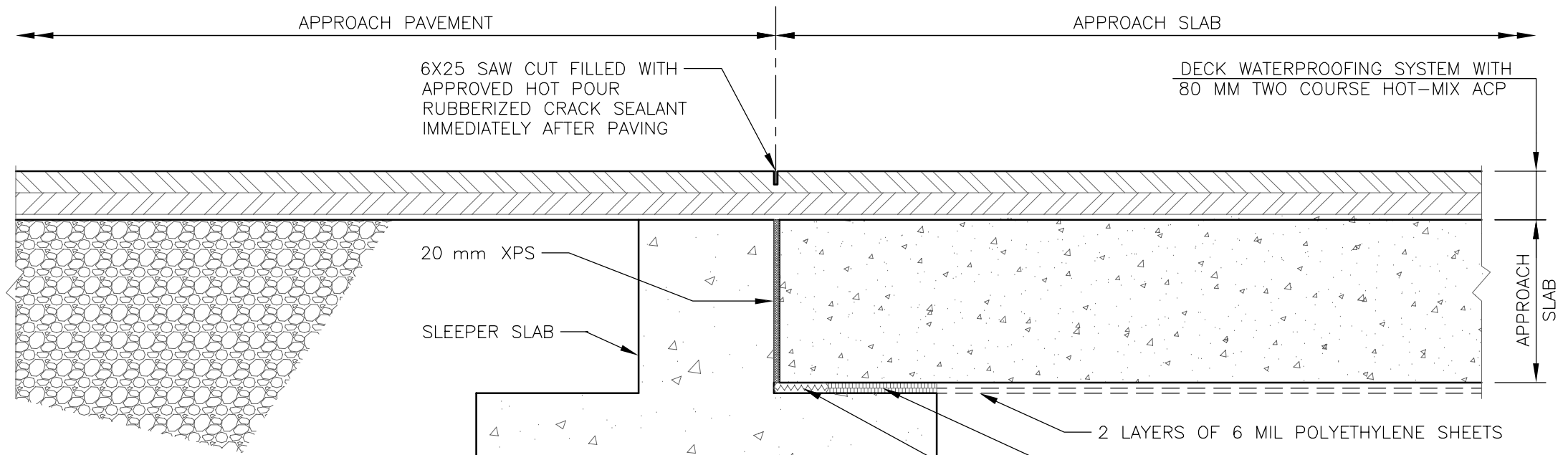


GENERAL NOTES:

- HIGH DENSITY RIGID CLOSED CELL FOAM, EXTRUDED POLYSTYRENE (XPS) WITH A MINIMUM COMPRESSIVE STRENGTH OF 414 kPa DETERMINED IN ACCORDANCE WITH ASTM D1621

CYCLE CONTROL JOINT TYPE 1

NTS



2 LAYERS OF 6 MIL POLYETHYLENE SHEETS

FINISH TOP OF SLEEPER SLAB SMOOTH AND PROVIDE 2 LAYERS OF WATERPROOFING PROTECTION BOARD

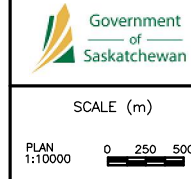
TRANSVERSE WICK DRAIN. DAYLIGHT ON SIDE SLOPE

150 Ø PERFORATED DRAIN. DAYLIGHT ON SIDE SLOPE, PROVIDE GALVANIZED SCREEN AT EACH END C/W FILTER SOCK

CYCLE CONTROL JOINT TYPE 2

NTS

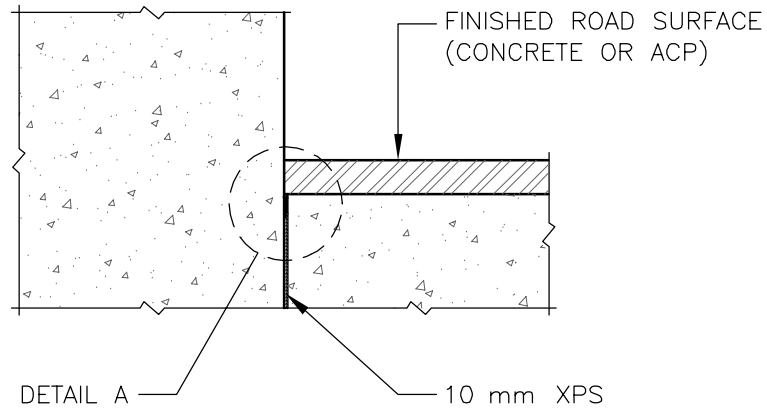
LEGEND



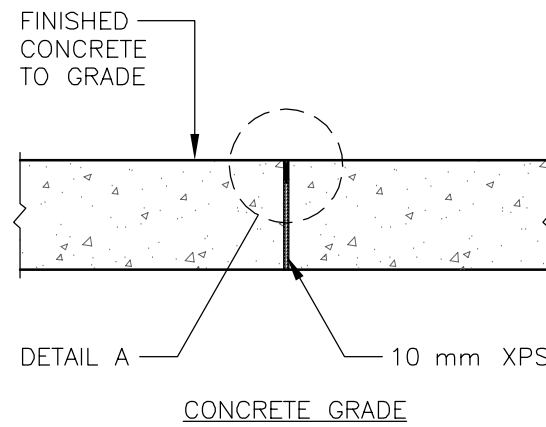
REVISIONS		
NO.	DATE	REVISION
1	29 JULY 15	ISSUED FOR COMMERCIAL CLOSE

REGINA BYPASS
 SCHEDULE 15 – APPENDIX B
 BRIDGE INFORMATION DRAWINGS
 BRIDGE
 CONCRETE JOINTS

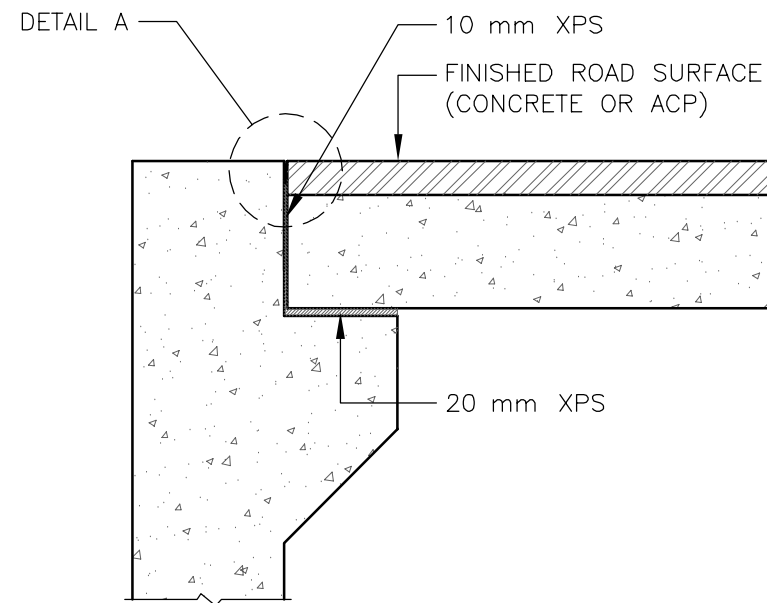
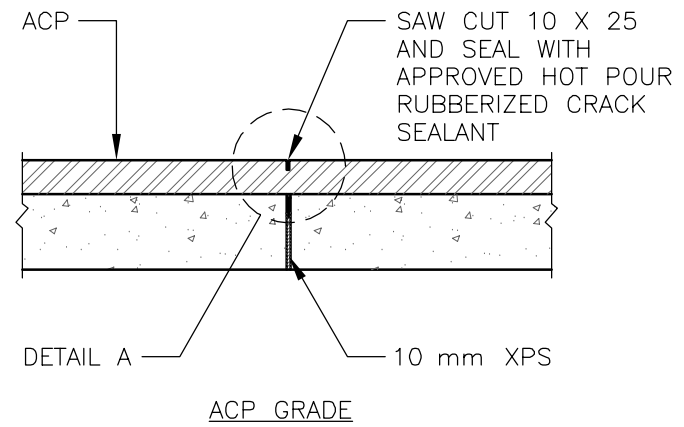
CS	TAB NO	SHEET	SK-3
PHOTO DATE		DATE	21 AUG 14
DRAWN BY	A. LECHKUN	DATE	21 AUG 14
DESIGNED BY	G. NEUMANN	DATE	21 AUG 14



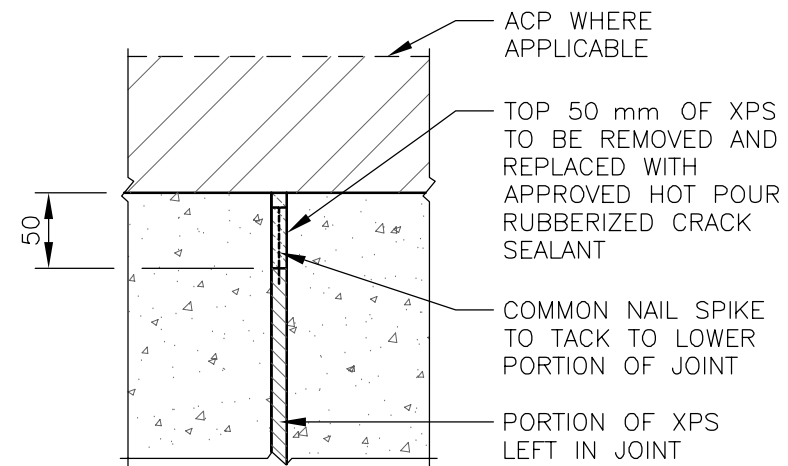
JOINT TYPE 1
 NTS



JOINT TYPE 2
 NTS



JOINT TYPE 3
 NTS







DETAIL A
 NTS

GENERAL NOTES:

- DIMENSIONS ARE GIVEN IN MILLIMETERS. DETAILS ARE NOT TO SCALE.
- HIGH DENSITY RIGID CLOSED CELL FOAM, EXTRUDED POLYSTYRENE (XPS) WITH A MINIMUM COMPRESSIVE STRENGTH OF 414 kPa DETERMINED IN ACCORDANCE WITH ASTM D1621.

LEGEND

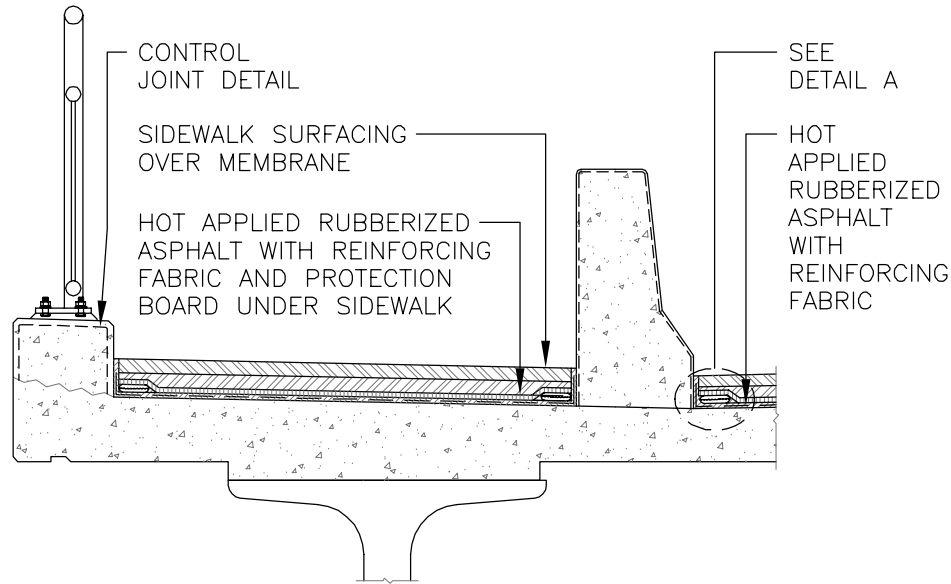


SCALE (m)
PLAN 1:10000
0 250 500

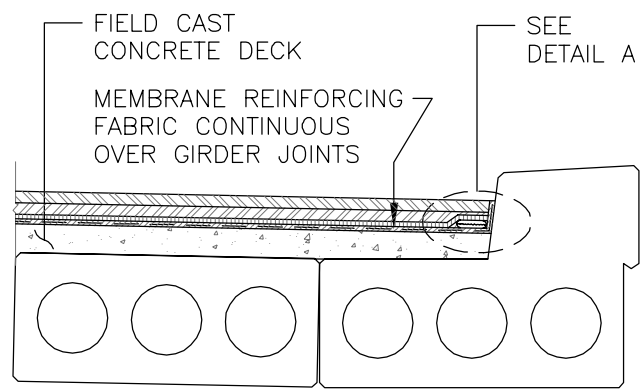
REVISIONS		
NO.	DATE	REVISION
1	29 JULY 15	ISSUED FOR COMMERCIAL CLOSE

REGINA BYPASS
SCHEDULE 15 – APPENDIX B
BRIDGE INFORMATION DRAWINGS
DECK WATERPROOFING DETAILS

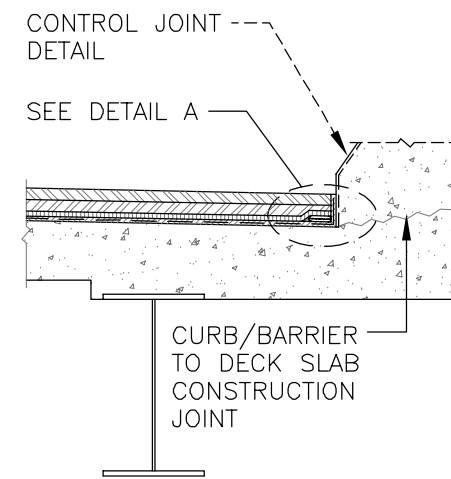
CS	TAB NO
PHOTO DATE	SHEET SK-4
DRAWN BY A. LECHKUN	DATE 21 AUG 14
DESIGNED BY G. NEUMANN	DATE 21 AUG 14



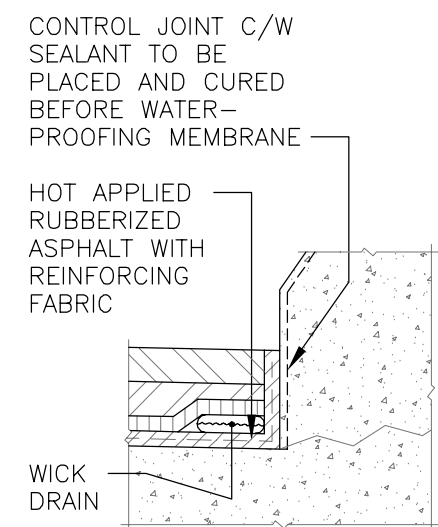
SIDEWALK SECTION
NTS



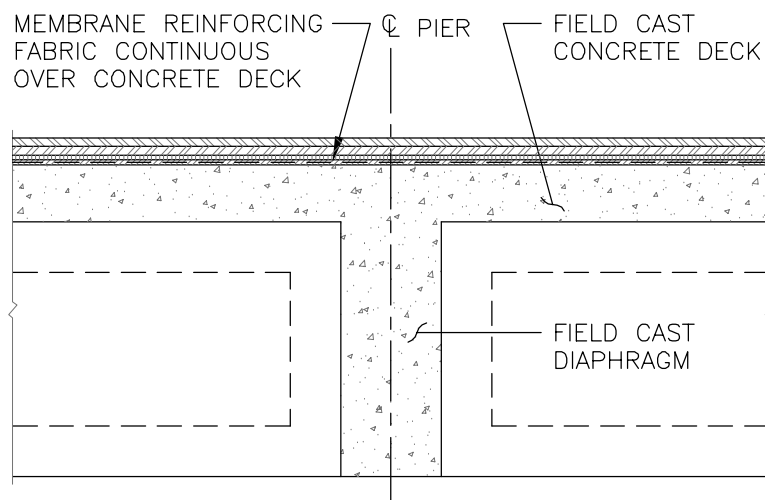
SCC/SCL COMPOSITE BRIDGES
NTS



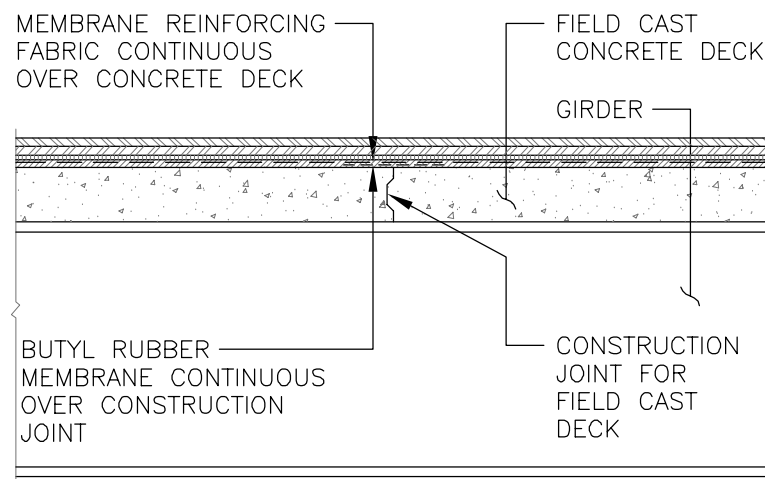
STEEL OR CONCRETE GIRDER BRIDGES WITH FIELD CAST DECK
NTS



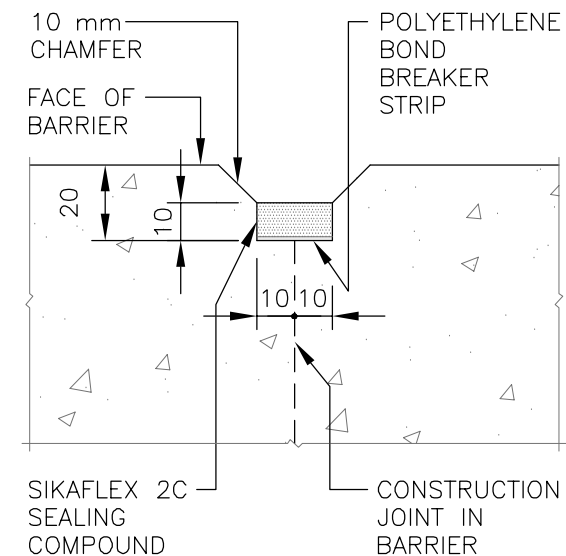
DETAIL A
NTS



PRECAST GIRDERS WITH C.I.P. PIER DIAPHRAGMS
NTS



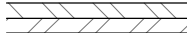
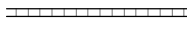
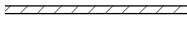
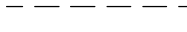


C.I.P. DECK CONSTRUCTION JOINTS
NTS



CURB/BARRIER CONTROL JOINT DETAIL
NTS

- NOTES:**
1. AFTER THE ENTIRE DECK HAS BEEN CAST, THE CONCRETE BARRIER SHALL BE PLACED IN 2500 mm LONG SEGMENTS (MAXIMUM). NO INDIVIDUAL SEGMENT SHALL BE CAST WITHIN 24 HOURS OF AN ADJACENT SEGMENT. AT CONTROL JOINTS, LONGITUDINAL REINFORCEMENT SHALL BE CONTINUOUS;
 2. CENTER CONTROL JOINTS BETWEEN BRIDGE RAIL POSTS;
 3. APPLY JOINT SEALANT AND ALLOW TO CURE PRIOR TO PLACING WATERPROOFING AND ACP.

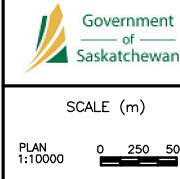
LEGEND:

-  80 mm TWO-COURSE HOT-MIX ASPHALTIC CONCRETE PAVEMENT
-  3.6 mm PROTECTION BOARD
-  5 mm HOT APPLIED RUBBERIZED ASPHALT (2-PLY REINFORCED)
-  MEMBRANE REINFORCING FABRIC (PLACED BETWEEN ASPHALT MEMBRANE LAYERS, CONTINUOUS)
-  1.2 mm BUTYL RUBBER MEMBRANE
-  3.6 mm WICK DRAIN

GENERAL NOTES:

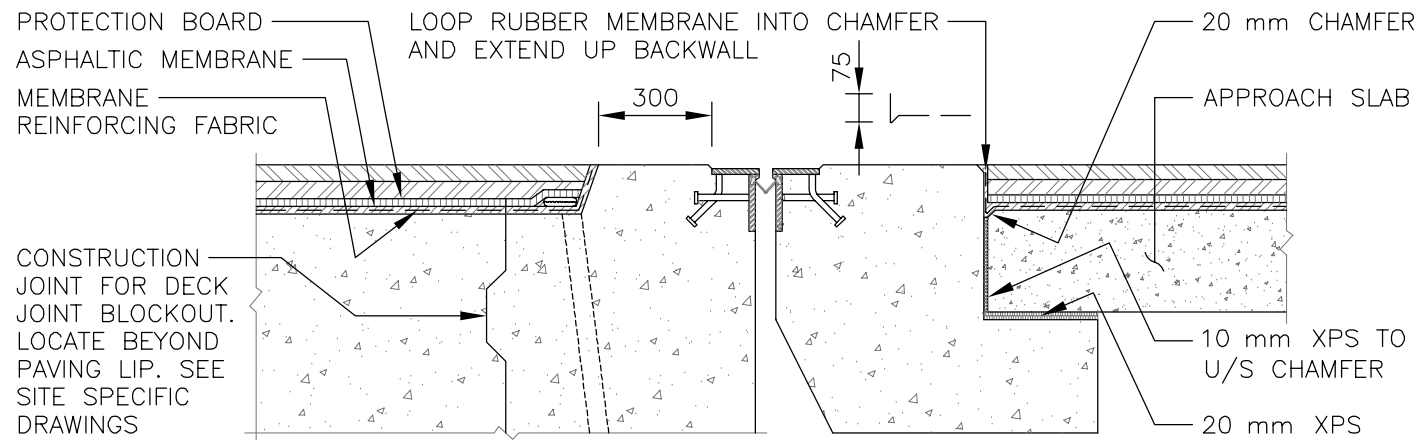
- DECK WATERPROOFING SYSTEM SHALL CONFORM TO THE REQUIREMENTS OF SCHEDULE 15-2.

LEGEND



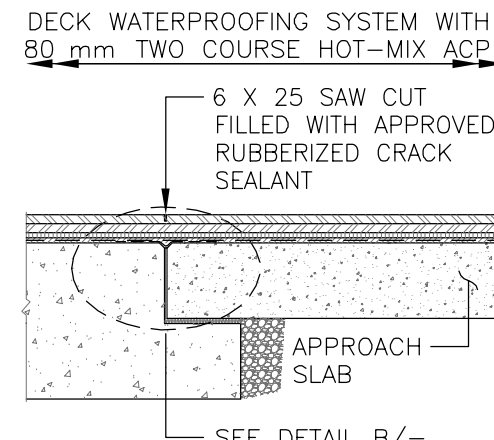
REVISIONS		
NO.	DATE	REVISION
1	29 JULY 15	ISSUED FOR COMMERCIAL CLOSE

REGINA BYPASS SCHEDULE 15 – APPENDIX B BRIDGE INFORMATION DRAWINGS DECK WATERPROOFING DETAILS			
CS		TAB NO	
PHOTO DATE		SHEET	SK-5
DRAWN BY	A. LECHKUN	DATE	21 AUG 14
DESIGNED BY	G. NEUMANN	DATE	21 AUG 14



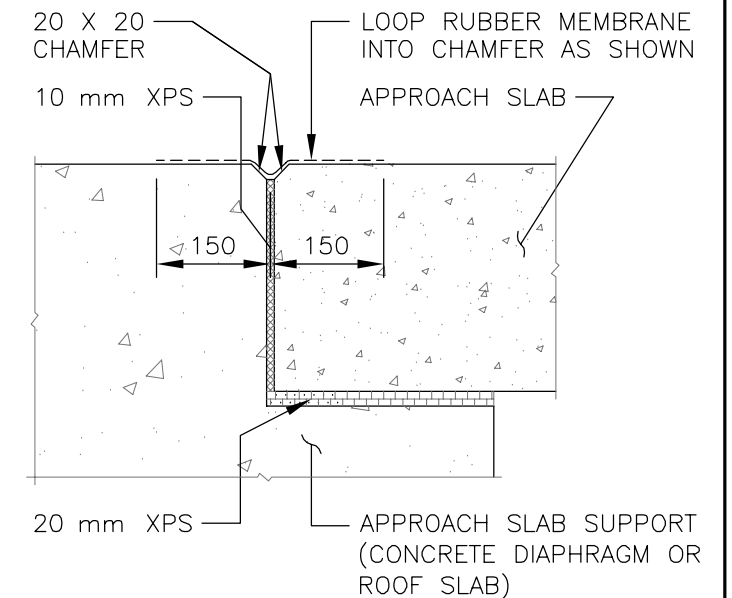
DETAILS AT DECK JOINTS

NTS



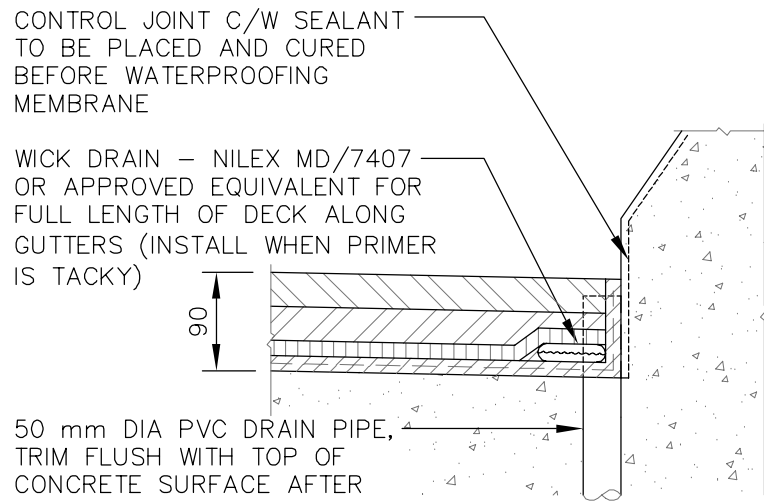
DETAILS AT APPROACH SLAB SUPPORT (EXCEPT AT SLEEPER SLAB)

NTS



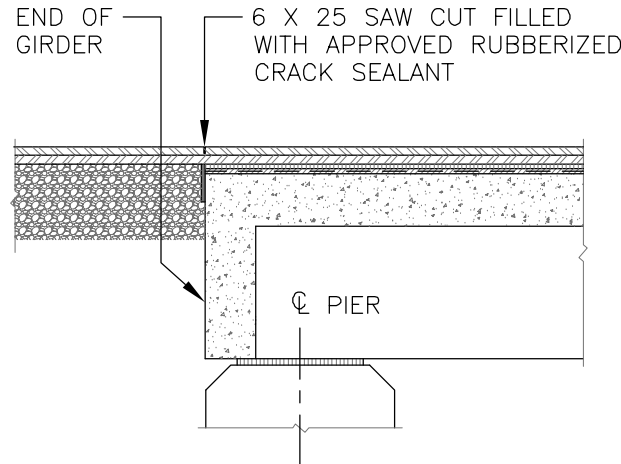
DETAIL B

NTS



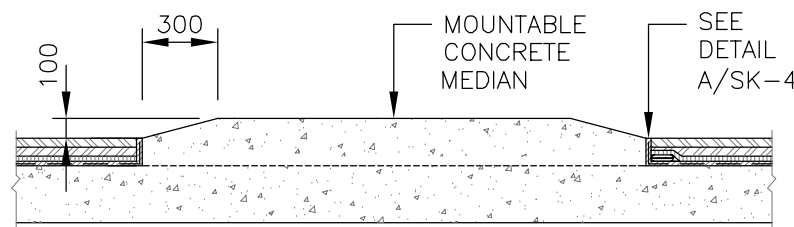
PVC DRAIN PIPE DETAIL

NTS



DETAILS AT BRIDGE ENDS WITHOUT APPROACH SLABS

NTS



MEDIAN ON DECK

NTS

NOTE:
WICK DRAIN REQUIRED AT HIGH SIDE OF MEDIAN FOR SUPER-ELEVATED DECK

LEGEND:

- 80 mm TWO-COURSE HOT-MIX ASPHALTIC CONCRETE PAVEMENT
- 3.6 mm PROTECTION BOARD
- 5 mm HOT APPLIED RUBBERIZED ASPHALT (2-PLY REINFORCED)
- MEMBRANE REINFORCING FABRIC (PLACED BETWEEN ASPHALT MEMBRANE LAYERS, CONTINUOUS)
- 1.2 mm BUTYL RUBBER MEMBRANE
- 3.6 mm WICK DRAIN

GENERAL NOTES:

- DECK WATERPROOFING SYSTEM SHALL CONFORM TO THE REQUIREMENTS OF SCHEDULE 15-2.